

Michigan Parent Support Options: Autism Spectrum Disorders

Some groups are informal while some are agency or organization sponsored.
Most groups are autism-related but some contain a mix of disabilities.

Updated June 18, 2018

Statewide: B.R.A.I.N.S., LLP, 3351 Eagle Run Dr. NE Ste. C, Grand Rapids, MI 49525. Call (616) 365-8920 or www.brainspotential.com. Free parent support groups the 2nd Sat. of every month.

Key: ● ASA Chapters
★ Support Groups

Heather Poll's support group for Baraga/Houghton/Keweenaw meets monthly; for families of kids with any disability. Email hlpoll_5@hotmail.com or call (906) 482-4216.

Ellen Moore has started a support blog. Visit <http://marquetteasupport.blogspot.com>

● **ASA Chapters**
Autism Society of Michigan
(517) 882-2800
Kalamazoo/Battle Creek
(800) 628-6421
Macomb/Saint Clair Counties
(586) 445-4915
Oakland County
(248) 393-3131
West Shore
(616) 395-3222

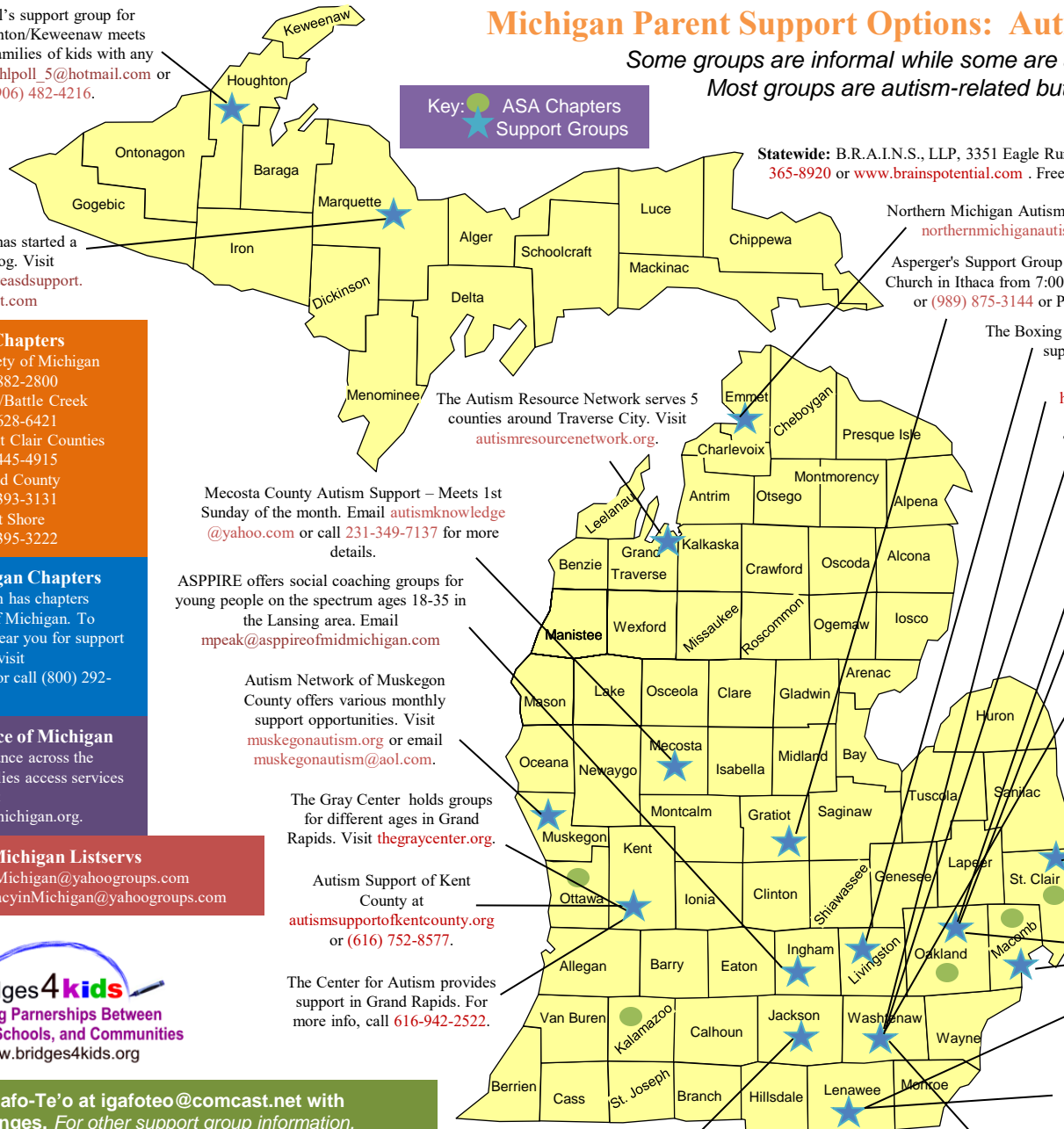
Arc Michigan Chapters
The Arc Michigan has chapters across the state of Michigan. To locate a chapter near you for support and information, visit <http://arcmi.org/> or call (800) 292-7851.

Autism Alliance of Michigan
Launching assistance across the state to help families access services and support. Visit autismallianceofmichigan.org.

Michigan Listservs
Autism-Michigan@yahoo.com
AutismAdvocacyinMichigan@yahoo.com



Email Jackie Igafo-Te'o at igafoteo@comcast.net with updates or changes. For other support group information, contact other disability groups in your area. Note: This map is a resource created and maintained by Bridges4Kids.org.



Northern Michigan Autism Association
northernmichiganautism.org

Asperger's Support Group on the 3rd Thursday of the month at the Presbyterian Church in Ithaca from 7:00- 9:00 p.m. Contact Marion at resp8ww9@verizon.net or (989) 875-3144 or Penny at pbearden@edzone.net or (989) 847-2704.

The Boxing Autism Club of Livingston County offers a monthly support group. Visit www.workforautism.com.

Autism Collaborative Center-EMU visit <http://www.emich.edu/acc/> The ACC offers individual, group, family and community services.

The Judson Center offers various support groups. Visit www.judsoncenter.org.

ASA/OCC offers many support group options in Oakland county. Visit www.asaoakland.org.

The SE Michigan Asperger Support Group meets the 2nd Wednesday of the month at the Hazel Park Public Library from 6:00-8:00 pm. Visit <http://www.meetup.com/SE-Michigan-AspergerSupportGroup/> for more information.

TACA Michigan holds Coffee Talks throughout the year. Families can informally network, share resources and speak with other parents. Meets in Ann Arbor. Email cindy.gonyer@tacanow.org for details.

Jackie Martin-Sebell can help provide support in this area of the state. Email jacquelinemartinsebell@yahoo.com.

Autism Navigator Parent Peer Support sessions. Contact Carolyn Gammicchia at 586-703-3866 for information on meeting locations in Macomb/Oakland Counties.

A group meets once a month @ The Milton C. Porter Center. Call (517) 263-8905 or mipoore@LCMHA.org

Autism HOPE of Lenawee meets 1st Tuesday of each month and the 2nd Tuesday of each month. See autismhopeoflenawee.org for more info.

The Autism Resource Network serves 5 counties around Traverse City. Visit autismresourcenetwork.org.

Mecosta County Autism Support – Meets 1st Sunday of the month. Email autismknowledge@yahoo.com or call 231-349-7137 for more details.

ASPPiRE offers social coaching groups for young people on the spectrum ages 18-35 in the Lansing area. Email mpeak@asppireofmidmichigan.com

Autism Network of Muskegon County offers various monthly support opportunities. Visit muskegonautism.org or email muskegonautism@aol.com.

The Gray Center holds groups for different ages in Grand Rapids. Visit thegraycenter.org.

Autism Support of Kent County at autismsupportofkentcounty.org or (616) 752-8577.

The Center for Autism provides support in Grand Rapids. For more info, call 616-942-2522.

Jackson Autism Network support group at disAbility Connections. Call 517-782-6054.

A2FACES in Ann Arbor meets occasionally and has a listserv for family members. Contact Barb Byers at babmay11@provide.net.